

SeaViper

HDPE Workboat



SEAVIPER

STOCK BOATS - READY TO OUTFIT

Built as a conventional vessel with a low hull resistance that promotes fuel economy, excellent high-speed stability and crew comfort for a smoother and drier boat.

STRUCTURE: Bare boat hull with bilge pumps

OUTFIT: None - ready to outfit as per buyer specification

ENGINE CONFIGURATION: Twin outboard

AVAILABLE WORKING DECK SPACE: 18 Sq.M (approx)

CARGO CAPABILITY: 3,000 kgs

Following LOAs available:

- 8 x 3m @ £28,900
- 9 x 3M @ £30,900
- 10 x 3M @ 32,900
- 11 x 3M @ £34,900

0.5M increments available - please enquire

Prices ex-works & exclude VAT

sales@seahorseworkboats.com

+44 (0)1757 289 632

+44 (0)7480 373 761

www.seahorseworkboats.com

Seahorse Workboats

Unit 7D, Sand Lane Industrial Park

Brighton, SELBY, UK, YO8 6DS



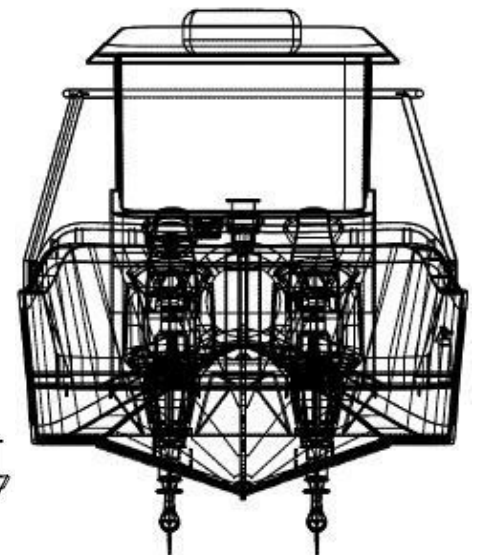
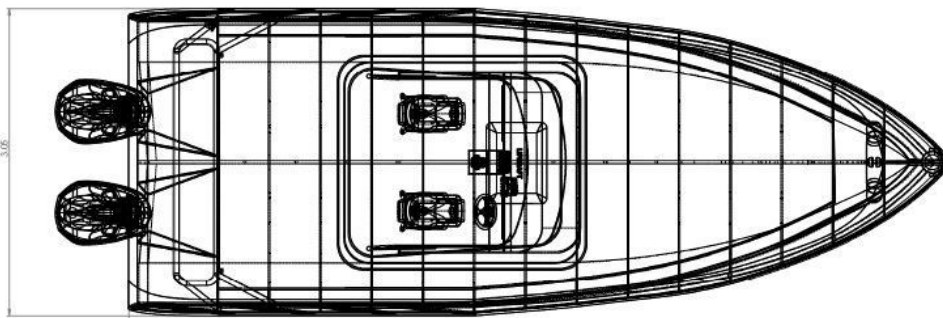


SeaViper

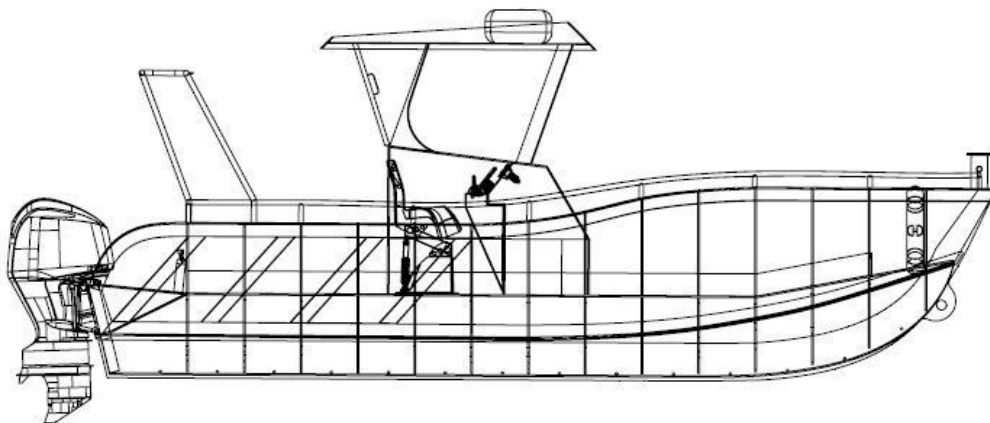
HDPE Workboat



SEAVIPER



SCALE 1 : 20



SCALE 1 : 20

LOA 8.5 x 3M STOCK BOAT - READY FOR ENGINE OUTFIT

PRICE: £59,250 exc engines | £79,995 with Honda 2 x 150hp outboard engines | prices ex-works & exclude VAT

STRUCTURE: Outfitted ready for engines

ENGINE CONFIGURATION: Twin outboard

AVAILABLE WORKING DECK SPACE: 10 Sq.M (approx)

DECK STRUCTURE: 2 x crew GRP cuddy (seats extra as per buyer choice)

OUTFIT: Treadmaster deck covering | AISI 316 handrails | AISI 316 stern A frame | 2 x 140L fuel tanks | batteries bilge pumps | lighting | Raymarine electronics | hatches | safety equipment (exc lift raft & life vests) | MCA coding available

sales@seahorseworkboats.com

+44 (0)1757 289 632

+44 (0)7480 373 761

www.seahorseworkboats.com

Seahorse Workboats

Unit 7D, Sand Lane Industrial Park

Brighton, SELBY, UK, YO8 6DS



SEAHORSE